

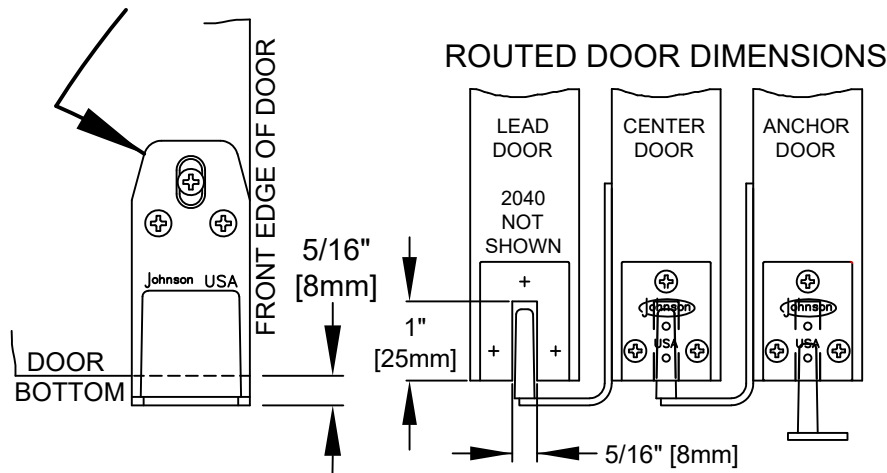
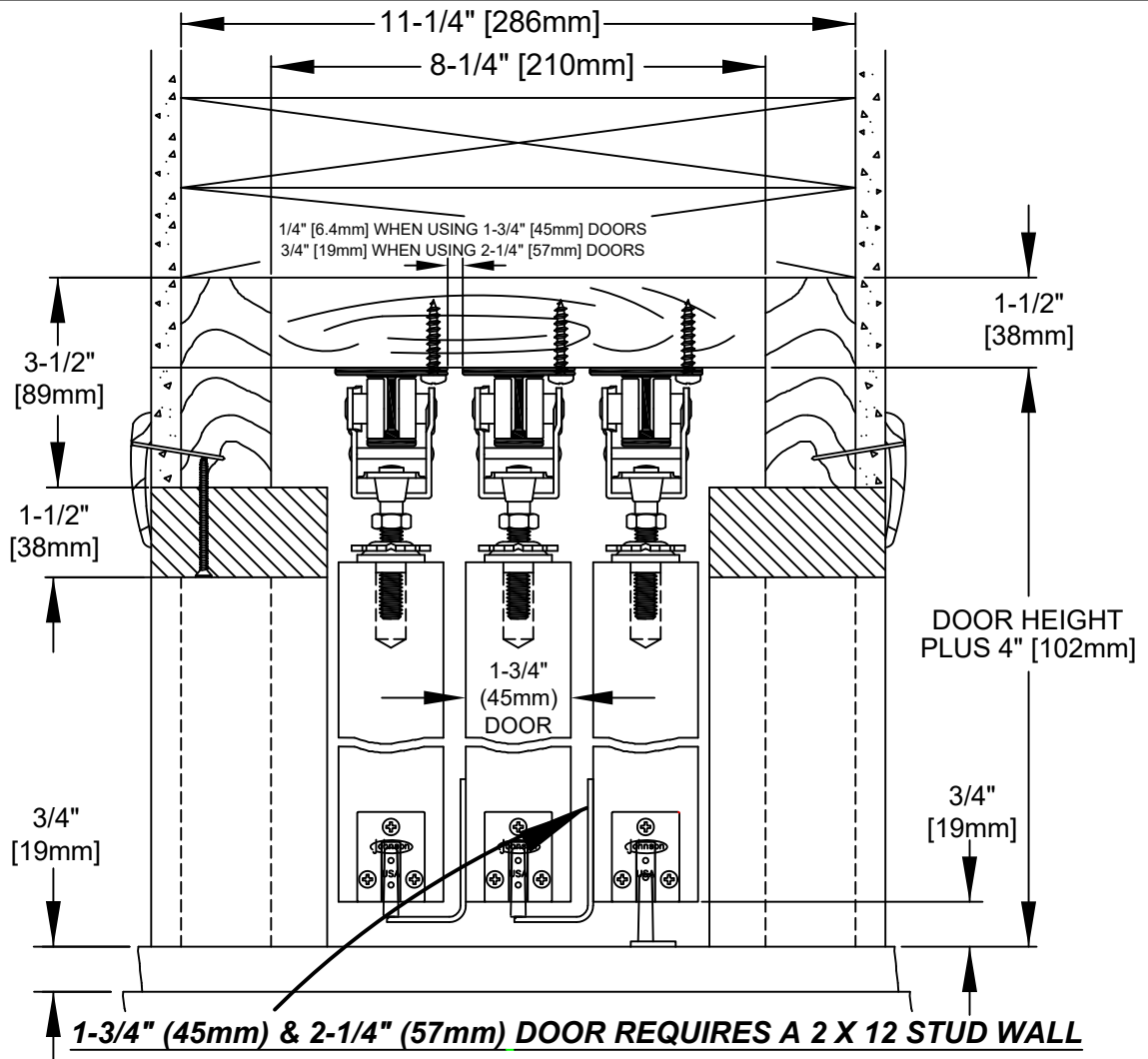


www.johnsonhardware.com

INSTRUCTIONS

MULTI-PASS POCKET DOOR 200MP SERIES

SIDEMOUNT GUIDES
2033 FOR 1-3/4" [45mm],
2036 FOR 2-1/4" [57mm]
DOOR THICKNESS



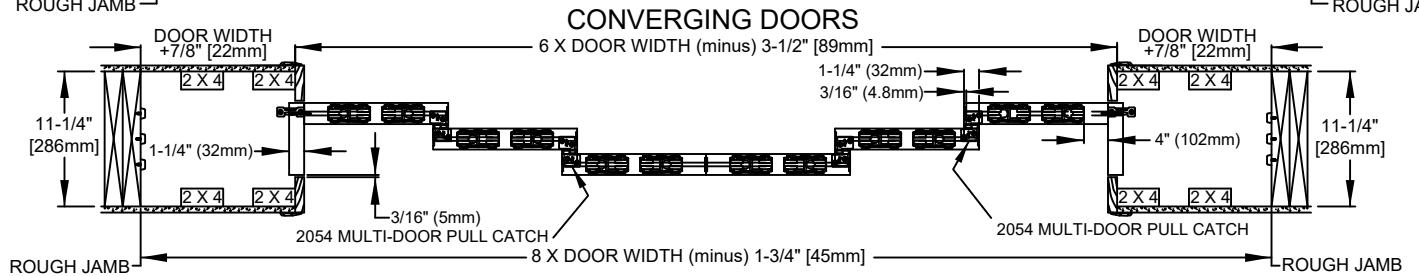
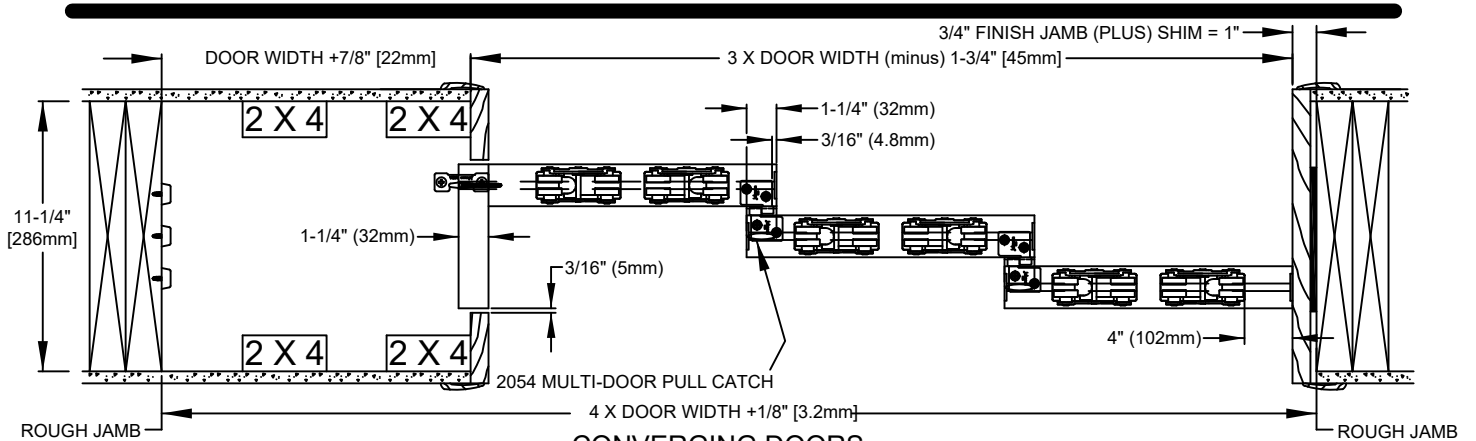


www.johnsonhardware.com

INSTRUCTIONS

MULTI-PASS POCKET DOOR 200MP SERIES

SIDEMOUNT GUIDES
2033 FOR 1-3/4" [45mm],
2036 FOR 2-1/4" [57mm]
DOOR THICKNESS



TRACK SPACING

