

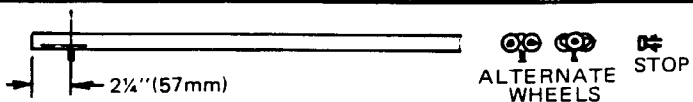
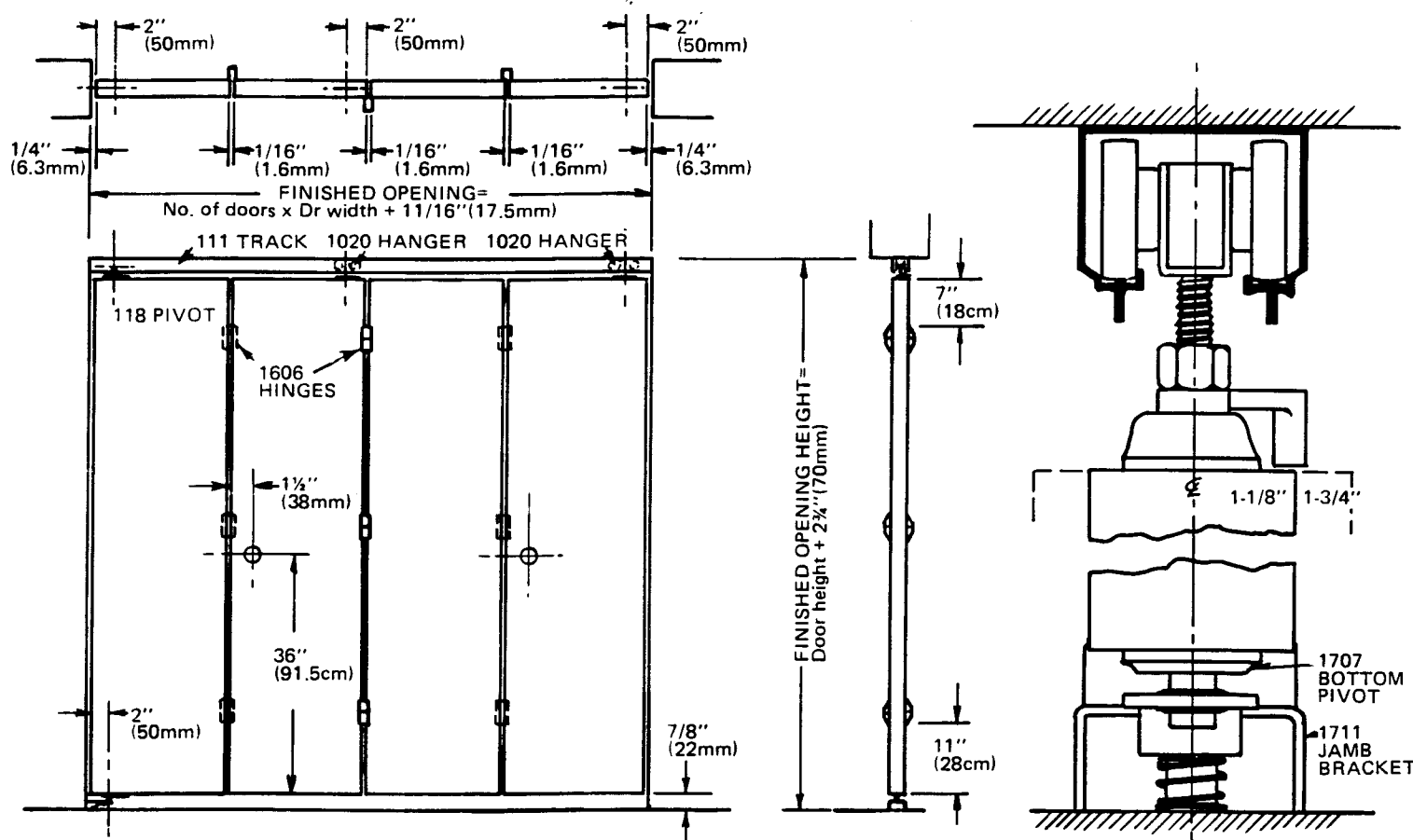


the quality people

INSTRUCTIONS

For 1-1/8" or 1-3/4" doors
up to 35 lbs. each

111RD Series Room Divider Hardware

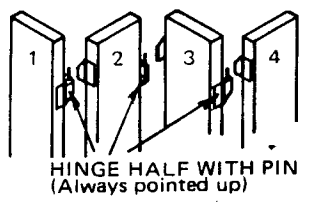


If necessary, cut track to fit opening. Slide pivot socket, hangers, and bumper stop into track before mounting track to head jamb. Fasten track in center of jamb using #8x1 1/4 screws. Position pivot pin 2 1/4" from side jamb and tighten in place. Locate jamb bracket directly below top pivot pin and fasten to jamb with #8x1 1/4 flat head screws.

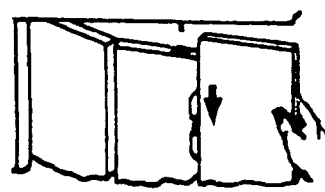
Insert top pivot pin into socket plate of first door and swing lock arm closed. Press down on socket of jamb bracket, and insert bottom pivot pin of door. Check for smooth swing of door.



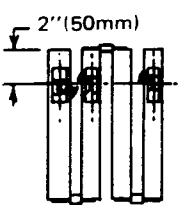
Fasten hinge halves to door edges as shown with #6x 3/4 flat head screws. Half with pin is always on edge of door furthest from jamb with pin always pointed up, and on alternating sides of succeeding doors.



Hang second door hinges over pins and slide hanger pin into top plate. Third door hinges go on second door pins and fourth door hinges go on third door pins. Slide hanger pin into top plate.



Mark centers of pivot plates on top edge of doors as shown, 2" from 'jamb' edge and on center. Fasten plates with pivot centers on these points, using #8x1 1/4 pan hd screws. Fasten bottom pivot pin directly below top pivot 5/8" from edge (2" to pin) with #8x1 ft hd scr.



Drill 3/16" (5mm) hole as shown in 2nd and 4th doors for knobs. Close doors, slide stop against hanger wheels, open doors and slide stop 1/8" towards jamb. Fasten to track. Doors should snap shut.

